

OFFICIAL BRAZORIA COUNTY
DISASTER &
HURRICANE GUIDE

ARE YOU PREPARED?



2019



Hurricane and Disaster Preparedness Expo June 22nd, 2019 10 AM- 2 PM

BRAZORIA COUNTY PREPARED

Dear Citizens of Brazoria County,

This 2019 Disaster and Hurricane Guide provides information that could save your life or the lives of your loved ones. I encourage you to take the time to look over the information provided in this guide to help you be prepared and informed during this hurricane season and throughout the year. Know your vulnerabilities and what actions you should take to prepare for an emergency and most importantly stay informed on conditions in our area. Preparedness is the key to protecting your family and property.

Find information inside on our new “ReadyBrazoriaCounty” App. I encourage everyone to download it on your phone today. The App is free, and will provide you important updates and information right in the palm of your hand.

Be Prepared and Stay Safe!

L.M. “Matt” Sebesta

Brazoria County Judge



BRAZORIA COUNTY Official Communication and Information

 [tinyurl.com/BrazoriaCo](https://www.facebook.com/BrazoriaCo)

 [@BrazoriaCounty](https://twitter.com/BrazoriaCounty)

 brazoriacountytx.gov

 pio@brazoria-county.com

 Download “Ready Brazoria County”
on the App Store or Google Play

Sign-up for the eNotification System
tinyurl.com/bcnotification

24 Hour Emergency Event Hotline Numbers:

979-864-1064

979-388-1064

281-756-1064



2019 DISASTER & HURRICANE GUIDE

2

GETTING PREPARED

- 2 Prepare Your Home
- 2 Prepare Your Vehicle
- 3 Family Disaster Check List
- 4 Marine and Businesses Prep.
- 5 Prepare for a Flood

6

IF YOU NEED A RIDE OUT OF TOWN

- 6 STEAR Registry (2-1-1)
- 7 Evacuation HUBS in Brazoria County

8

IF YOU HAVE YOUR OWN TRANSPORTATION

- 8 Evacuation Plans
- 9 Evacuation Zones
- 10 Evacuating Pets
- 10 Evacuating Livestock
- 11 Emergency Shelters

12

ALL HAZARD INFORMATION

- 13 Severe Weather and Skywarn
- 14 Heat and Generator Safety
- 15 Shelter in Place
- 16 Ready Brazoria County App

17

VOLUNTEER OPPORTUNITIES

- 17 Volunteer Opportunities

18

RETURNING HOME

- 18 Returning Home

GETTING PREPARED

Prepare Your Home



- Buy flood insurance.
- There is a 30 day waiting period before newly purchased flood insurance goes into effect.
- Install commercial shutters or prepare 5/8 inch plywood panels for your windows.
- Reinforce garage doors so that they are able to withstand high winds. Garage doors are frequently the first feature in a home to fail.
- Trim all dead wood, weak, and overhanging branches from trees as they could damage your or your neighbor's property.

Before you leave

- Move outside items to safety, such as patio furniture, plants, and grills.
- Put valuable documents in waterproof containers and take them with you when you evacuate.
- Turn off electricity at the main circuit breaker or fuse box.
- Turn off gas at the appliances.
- Remove perishable items from your refrigerator and freezer.
- Make a final walk-through inspection before closing the door.
- Close all interior doors in your home.

Brazoria County eNotification System

Sign-up to receive emails on upcoming events, projects, road closures, emergency communications, etc. Stay informed! Sign up TODAY!

tinyurl.com/bcnotification

Prepare Your Vehicle

- Fill up with fuel before you leave town. It's smart to keep your tank at least half full during the entire hurricane season.
- Check your vehicle's fluid levels and ensure there is adequate coolant in the radiator.
- Check your tire pressure.
- Ensure you have a jack, a lug wrench, and know where they are in the vehicle.
- Carry enough water and non-perishable food for you and your passengers in case you become stranded.
- Have a working flashlight and extra batteries.
- If you are stranded, stay with your vehicle and use emergency flashers. Tie a white cloth on the antenna or door handle and raise the hood.



If you're traveling with children be sure to pack items to help keep them entertained

- Reading materials, puzzle, games, coloring books, and electronics with extra chargers and batteries.
- Fun road games like Highway BINGO and I Spy. Go Online to find lists and ideas.
- Low sugar snacks and sugar free drinks.
- A change of clothes.



Family Disaster Checklist

Essentials

- Cell phone and charger
- This guide
- Battery-operated radio
- Flashlight
- Extra Batteries
- Cash
- Map of the area

Baby Needs

- Formula, diapers, bottles, medication and powdered milk.

Medical Needs

- Insulin
- Prescription drugs in original containers
- Heart and high blood pressure needs
- Denture needs
- Extra eye glasses
- Contact lenses and supplies
- Doctor's phone numbers

Clothing & Bedding

- Plastic garbage bags, ties
- Sunglasses
- Rain gear
- Sturdy shoes or work boots
- Blankets or sleeping bags
- Complete change of clothing and footwear per person

Cooking Preparation

- Mess kits or paper cups, plates and plastic utensils
- Non-electric can opener, utility knife
- Barbecue for outdoor use only with charcoal and lighter, or sterno stove
- Pot or pan
- Manual can opener
- Barbecue utensils and cooking utensils

Entertainment

- Games & books

Safety

- First Aid Kit (one for your home and one for each car)
- Fire Extinguisher
- Whistle
- Compass

Food

- Minimum 7-day supply of nonperishable food that requires no refrigeration or preparation, and little or no water
- Dry cereal
- Peanut butter
- Canned fruits
- Canned vegetables
- Canned juice
- Ready-to-eat canned meats
- Ready-to-eat soups (not concentrated)
- Quick energy snacks
- Graham crackers

Important documents

- Important telephone numbers
- Record of bank account numbers
- Family records (birth, marriage, death certificates)
- Inventory of household valuables with digital pictures and video
- Copy of will, insurance policies
- Records of credit card account numbers and companies
- Copy of passport, social security cards, and immunization records
- Current Utility Bills

Pet Needs

- Food, leash, collar/ harness, carrier, non-tip food and water containers

Water

- 7 gallons per person, minimum, in a food-grade, plastic container
- Additional water for sanitation

Sanitation

- Disinfectant
- Household chlorine bleach
- Soap, liquid detergent
- Toilet paper, towelettes, paper towels
- Personal hygiene items
- Cloth towels (at least 3)
- Feminine supplies
- Plastic bucket with tight lid
- Plastic garbage bags, ties (for personal sanitation use)
- Hand Sanitizer

Supplies


- Insect Repellent
- Sunscreen
- Aluminum Foil
- Paper, Pencil
- Plastic sheeting and tarp
- Medicine dropper
- Needles, thread
- Matches in a waterproof container
- Plastic storage containers
- Ziplock bags

Tools

- Assorted nails, wood screws
- Pliers, screwdriver, hammer
- Paper, Pencil
- Heavy rope
- Tape, duct tape and plumber's tape or strap iron
- Patch kit and can of seal-in-air for tires
- Shut off wrench to turn off household gas & water

You may want to include

- Family photos, jewelry and select irreplaceable personal items.
- An external Hard Drive

 Download "Ready Brazoria County" on the App Store or Google Play.



Protecting Your Boat – Marine Prep

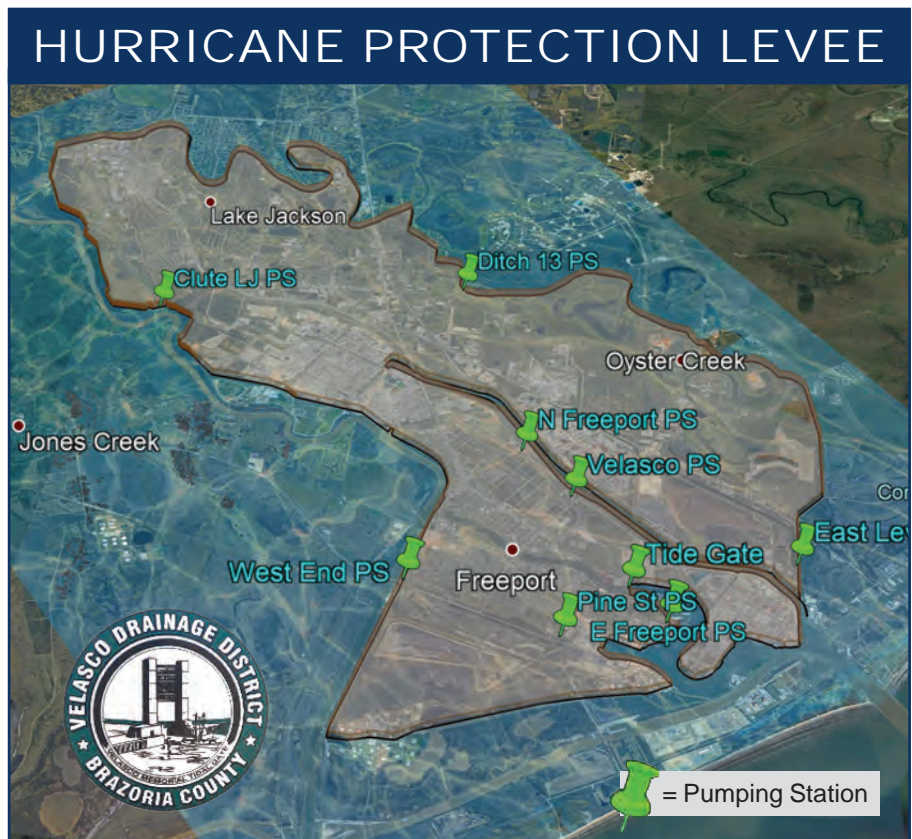
- Check your marina contract for policies and procedures for hurricanes.
- Check with the manufacturer for proper ways to secure your boat during a storm.
- Consider moving arrangements well in advance of an approaching storm.
- Trailerable boats should be removed from the water and securely stored at least 48-hours before a hurricane is expected to make landfall.
- Purchase necessary hurricane materials such as additional mooring lines, crew anchors, fenders, fender boards, chafing gear, and anchors.
- Safe storm moorings should consist of good condition ropes of sufficient diameter and length, with at least three or four substantial anchor points.
- Do not moor parallel to bank. Receding tides often capsize boats in this type of mooring.

Business & Employee Preparation

- Identify and protect vital records. Backup and store key files off site.
- Protect electronic equipment from possible water damage.
- Have extra cash and blank checks in case extra money is needed after the storm.
- Identify a safe room for employees who must remain in the building.
- Develop a 24-hour emergency contact list with phone numbers for employees to check in and receive company information.
- Establish a temporary location for business operations in case your facility is damaged.
- Give employees enough time to secure their homes and families.
- Consider paying employees before they leave to prepare their homes.

What to do if you live in a flood-prone area:

- **Buy flood insurance.**
- Determine if you live behind a levee, find out who owns the levee near you, and do your part to promote levee safety.
- Visualize the impact if your levee is over-topped or breached and your neighborhood is flooded.
- Develop an emergency action plan to follow in case of flooding.
- Take advance precautions to reduce potential flood damage.
- Support funding initiatives for levee improvement projects.



How to prepare for a flood

BE INFORMED

- Know if you are located in a flood-prone area and your flood risk.
- Stay informed through local media, trusted social media sites, the Ready Brazoria County App, city and/or county websites.

IF YOU HAVE PETS OR LIVESTOCK

- Consider precautionary evacuation of your animals. Waiting until the last minute could be fatal for them and dangerous for you.
- Move livestock to higher ground.
- Don't leave companion animals behind if you evacuate your home. Tying up animals can cause the animal to suffer unnecessarily and be vulnerable to the elements and possible drowning.
- Prepare an animal emergency kit. The kit should include food, bowl, leash, crate, bed, toys and any medication your animal may need.

PROTECT YOUR HOME

- Clear gutters and drains. Keep gutter and drainage systems clear to carry water away from your home.
- Catalog possessions. Using a digital camcorder or camera, create a home inventory for insurance. Store digital files on a USB drive and take it with you during an evacuation event.

- Raise furniture and move expensive items to a safe location. Take irreplaceable items such as photographs and important documents with you if asked to evacuate.
- Anchor your fuel tanks. Unanchored tanks can float, rupture, and release fuel.
- Turn off your electricity at the breaker box and unplug sensitive equipment, such as computers, TV's, etc. before evacuating your home.

BE PREPARED TO EVACUATE

- If Mandatory Evacuation is issued by officials, leave the area for your safety and the safety of your family. **REMEMBER**, take your animals with you.
- For your safety, you will not be able to re-enter an evacuated area until area is deemed safe to return by local officials.

TURN AROUND DON'T DROWN

- Do not drive into or go near flooded streets or areas.
- Do not go around safety barriers or barricades.

 [tinyurl.com/BrazoriaCo](https://www.facebook.com/BrazoriaCo)

 [@BrazoriaCounty](https://twitter.com/BrazoriaCounty)

 brazoriacountytx.gov

 Download "Ready Brazoria County" on the App Store or Google Play



IF YOU NEED A RIDE OUT OF TOWN



S.T.E.A.R. REGISTRY

State of Texas Emergency Assistance Registry

If you need a
ride to safety,
during an
emergency
**register with
STEAR today!**



**Don't
wait,
register
today!**



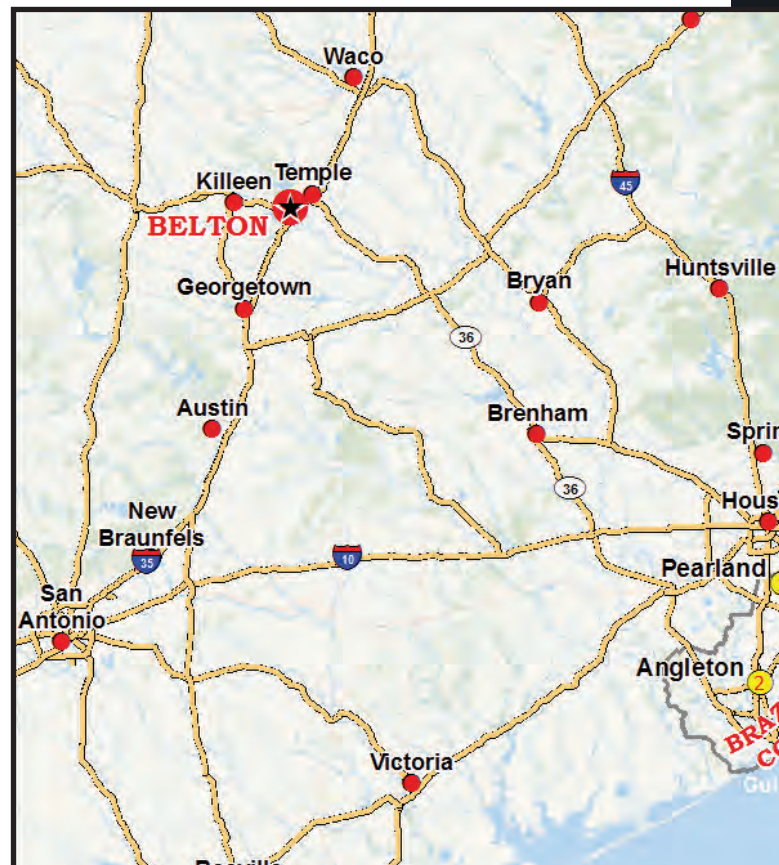
Hurricane season starts June 1 and continues through November 30.

REGISTER NOW!

This service is for people who cannot drive themselves and have no other transportation during an emergency event.

Register today by dialing
2-1-1 or online at:
<http://tinyurl.com/TXSTEAR>

SCAN ME TO REGISTER



IF YOU NEED A RIDE OUT OF TOWN

Evacuation HUBS in Brazoria County

What is a HUB?

A HUB is a meeting location for residents who need public transportation during an evacuation.

Residents will be checked in and bused to public shelters in Belton, Texas.

There are two HUB locations in Brazoria County.

1 PEARLAND
Recreation Center
4141 Bailey Road
Pearland, TX

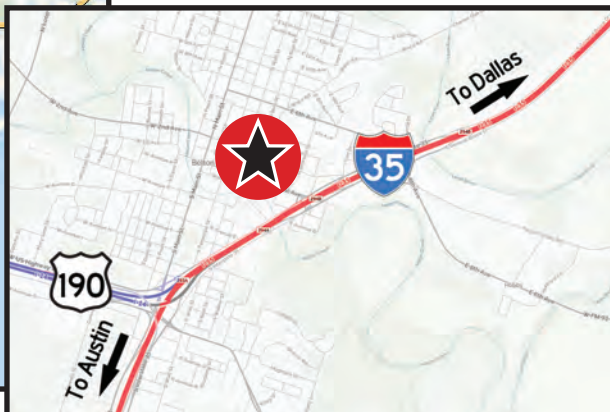
2 ANGLETON
Fairgrounds
901 S Downing Rd
Angleton TX

If you need assistance getting to one of these HUBS, contact your emergency coordinator.
“See Pages 19-21”

EVACUATION DESTINATION



**Bell County
Annex Building**
550 East 2nd Avenue
Belton, TX 76513



What should I bring with me?

- Medications for at least 10 days.
- Driver’s license or state issued picture ID.
- Sleeping pads or air mattresses.
- Blankets or a sleeping bag for each person.
- Robe & shower shoes with toiletries.
- Books, cards, games and QUIET toys for children.
- Snacks
- Five days worth of clothing
- No more than two pieces of luggage and one carry-on bag per person.
- **NO Alcoholic beverages, weapons, or illegal drugs are allowed in HUBs or on buses.**

Will my pet ride with me?

- HUB Coordinators have final say over all pet transports.
- As a general rule, pets will be transported with the owner. However, if a situation dictates, they may be transported in a separate vehicle.

Public transportation and animal evacuations

- Only non-aggressive household pets will be permitted. No reptiles or farm animals.
- Up to two pets per household will be allowed on the bus. If you feel you **MUST** take more than two pets, please contact your city’s local emergency manager **BEFORE** an evacuation is called.
- All animals **MUST** be transported and housed in a sturdy plastic or metal cage/transport device. No cardboard or partly enclosed devices will be allowed.
- Animals must remain secured in the travel device at **ALL TIMES** while on the bus and at the HUB.
- Pets must have current rabies shot records.
- Owners are responsible for supplying food and water for their animals.
- We are not liable for any losses or injuries to your animals while being evacuated.

IF YOU HAVE YOUR OWN TRANSPORTATION

Evacuation Plans

How do I know when to evacuate?

Don't wait! It is NOT safe to wait. Plan to leave early.

Mandatory evacuation orders will come from your local officials. Evacuations will be based on zip codes. Please be prepared to leave immediately. See pages 19-21 for specific information pertaining to your city's communication of recommended evacuations.

Should I evacuate?

Do not wait until a mandatory evacuation is issued. Monitor conditions and leave whenever you can. Hurricanes and disasters can be extremely unpredictable and can become much more dangerous in a matter of hours.

Where should I go?

You may evacuate to any city you choose. Brazoria County residents who need shelter should go to Belton, Texas. If you do not have hotel reservations or family you can stay with, you may evacuate to the public shelters. See map on page 6.

What route should I take?

There are no mandatory routes you must take when evacuating from your city. In fact, there are several different routes you may take. When weather is good, take your family on an outing to check routes and become familiar with roadways and fuel locations.



familiar with roadways and fuel locations.

The State has designated evacuation routes: SH-36, SH-288, SH-6, I-45, SH-290, HWY-59. If you choose to take an alternate

route, essential services such as food, fuel, etc. are not guaranteed. Depending on the strength of the storm, contra-flow lanes might be open on SH-45, I-10, and SH-290 thirty-six (36) hours prior to the arrival of gale force winds. Plan your evacuation routes carefully (having more than one route planned), realizing that contra-flow lanes have priority over all other routes.



Bell County Annex Building Belton, Texas. Map on page 6.

When evacuating you should:

- Coordinate your departure with the people who will be traveling with you.
- Notify an out-of-area person of your evacuation plans.
- Make arrangements for your pets.
- Pack your disaster supply kit into your vehicle.
- Secure your home.
- Double check your evacuation route and leave.

Should I carry food and drinks in my car?

Yes! Stopping for food or drinks during a large scale evacuation may significantly delay you in getting to your destination. Some restaurants and stores along hurricane routes may be closed and those that are open are likely to be very crowded. Additionally, once you leave the evacuation route to purchase food or drinks, it may be difficult to re-enter the flow of traffic.

What can I do to help others?

Check on friends, neighbors and assist them if you can to make sure they can evacuate. If you cannot, help them get in touch with the local emergency management office.



I don't want to evacuate!

Should you choose to stay, please remember there are **NO SHELTERS** in Brazoria County. There will be **NO SERVICES** available to you (sewer, water, electricity, etc). Hospitals will close, ambulances will not run, and police and fire cannot respond until the storm passes.

IF YOU HAVE YOUR OWN TRANSPORTATION

Fuel

- Keep your fuel tank at least half full during hurricane season.
- Motorists should fill their tanks before evacuating.
- TxDOT works with the private sector to assure fuel availability on designated evacuation routes only.
- TxDOT courtesy vehicles will be patrolling designated evacuation routes for those stranded.



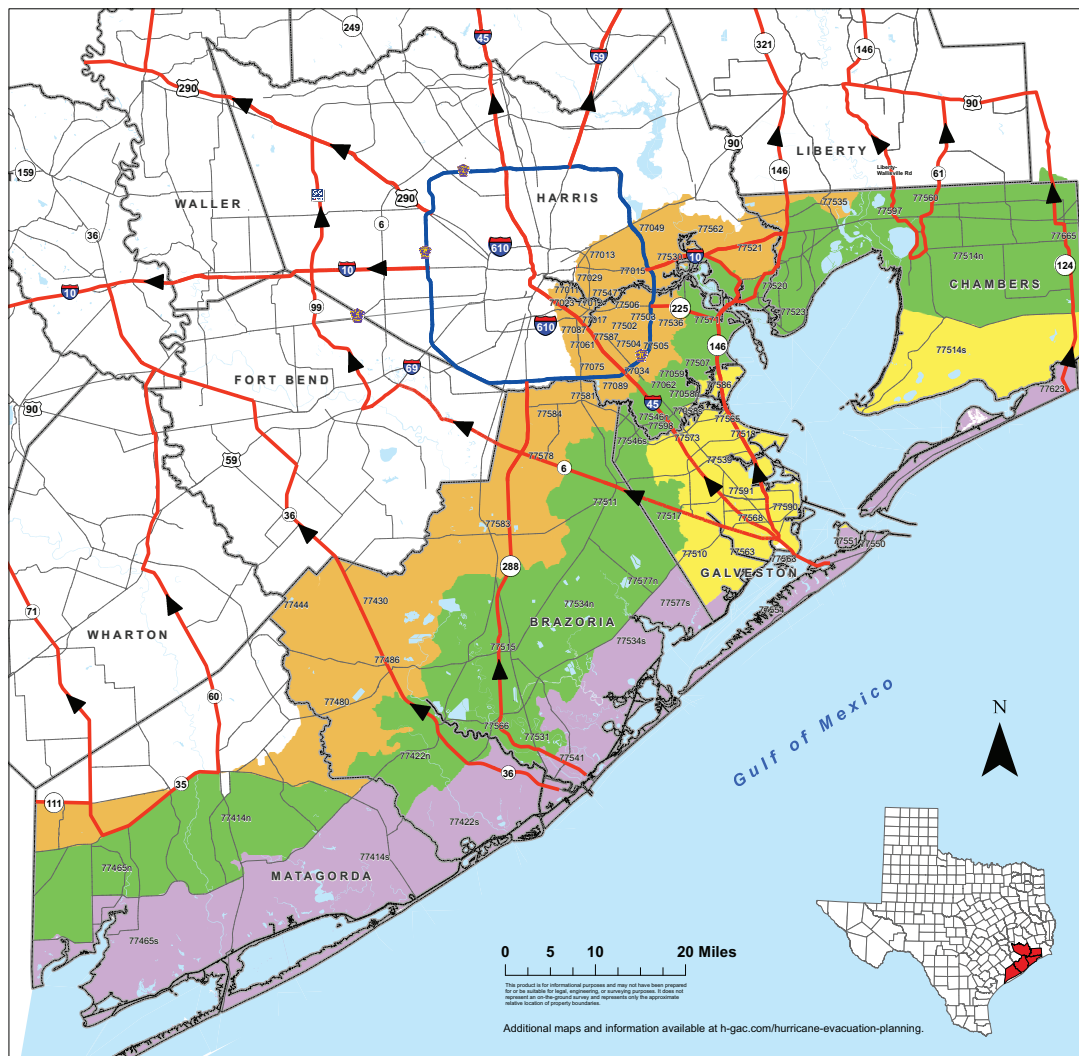
Check COUNTY road conditions online
<http://bit.ly/BCRoadClosure>

Check STATE road conditions online
drivetexas.org

Or call: 1-800-452-9292

Know Your Evacuation Zone

Mandatory evacuations will be based on zip codes.
 Be prepared to leave immediately after your zip code is called.



Brazoria, Chambers, Galveston, Harris, and Matagorda Hurricane Evacuation Zip-Zones Coastal, A, B, C

| ZIP ZONE COASTAL | | | | |
|------------------|--------|--------|--------|--------|
| 77414s | 77422s | 77465s | 77534s | 77541 |
| 77550 | 77551 | 77554 | 77563 | 77577s |
| 77623 | | | | |
| ZIP ZONE A | | | | |
| 77058s | 77510 | 77514s | 77518 | 77539 |
| 77563 | 77565 | 77568 | 77573 | 77586 |
| 77590 | 77591 | | | |
| ZIP ZONE B | | | | |
| 77058n | 77059 | 77062 | 77414n | 77422n |
| 77465n | 77507 | 77511 | 77514n | 77515 |
| 77517 | 77520 | 77523 | 77531 | 77534n |
| 77546n | 77546s | 77560 | 77566 | 77571 |
| 77577n | 77597 | 77598 | 77665 | |
| ZIP ZONE C | | | | |
| 77011 | 77012 | 77013 | 77015 | 77017 |
| 77023 | 77029 | 77034 | 77049 | 77061 |
| 77075 | 77087 | 77089 | 77430 | 77444 |
| 77480 | 77486 | 77502 | 77503 | 77504 |
| 77505 | 77506 | 77521 | 77530 | 77535 |
| 77536 | 77547 | 77562 | 77578 | 77581 |
| 77583 | 77584 | 77587 | | |

Some zip codes are split into north (n) and south (s) for evacuation purposes.

Route Designation

- Evacuation Corridors
- Evacuation Connections
- Other Roads
- County Boundary



Revision Date: March 18, 2019
 Expiration Date: December 31, 2019
 Map Created by:
 Houston-Galveston Area Council

IF YOU HAVE YOUR OWN TRANSPORTATION

Evacuating Pets

All food and medication must be provided by owner. If you have questions, please contact your local emergency manager (pages 19–21).



- If you are evacuating to a hotel, ask about pet policies that might exist. Not all facilities accept animals.
- The inland shelter location will be equipped to shelter most animals.
- As a general rule, pets will be sheltered separately with the exception of service animals that must stay with their owners.
- All animals must be housed in a sturdy plastic or metal cage.
- All food/medication must be provided by owner.

Important pet supplies



- Medications
- Food, Water
- Non-tip food and water containers
- Leash/Collar, Harness, and Carrier
- Records of Vaccinations
- Hand Sanitizer
- Waste disposal bags
- Training pads
- Towel or Blanket



Evacuating Livestock

Where to Go?

If you have friends or family who have a place to board your livestock, that is your best option. Public shelters are temporary, lasting maybe a few days. Bell County Annex Building in Belton, Texas can accommodate cattle, horses, and sheep, swine and goats, high value livestock—horses, show animals, youth animal projects, etc. The Bell County Annex Building is located at 550 E 2nd Ave, Belton, Texas.

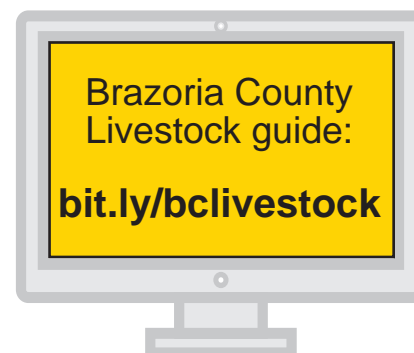


When evacuating contact the County agent (254) 933-5305 before leaving home to let Bell County know you're coming. Other shelters for livestock are available



throughout the state, but contact information on those sites isn't released until shortly before an evacuation. As this information is received, it will be posted on the Brazoria County website at brazoriacountytx.gov and at the Emergency Management office at (979) 864-1064. Public shelters provide only shelter and water. Feed

and hay are the owner's responsibility. **Public shelters require all equine to have current vaccinations and Coggins test paperwork.**



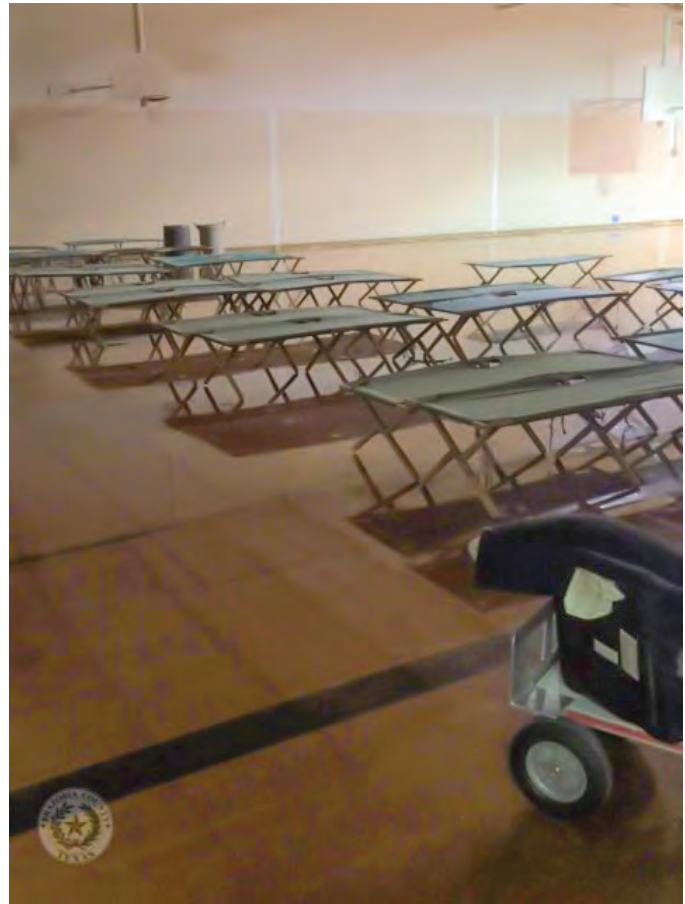
IF YOU HAVE YOUR OWN TRANSPORTATION

What to Expect in an Emergency Shelter

When disasters occur, the county or state may provide a safe refuge in temporary emergency shelters. These shelters can be located in schools, churches, office buildings or other facilities. General population shelters are stocked with basic need essentials, such as food, water, and a warm place to sleep. Keep in mind, a shelter will not be able to provide the same level of comforts of home or a hotel. Shelters can be noisy, crowded, boring, short-staffed, and provide very little privacy. If you are able, staying with friends or relatives is a better choice.

Items to Bring to an Emergency Shelter:

- Bring identification
- Important /insurance papers
- Bring blankets/sleeping bags, pillows
- Bring baby supplies – food, diapers, formula, medication, etc.
- Bring cards/games/books to pass the hours
- Flashlights with extra batteries
- Cell phone and charger
- Important phone numbers, i.e. family members, doctor, etc.
- Prescription and emergency medication in original containers
- Medical equipment, i.e. oxygen/wheelchair
- Extra clothing
- Specialty snacks and juices for dietary needs
- Hygiene supplies
- Shower Shoes
- Basic snacks
- Folding chairs
- Other comfort items as needed
- Pets ONLY in carriers
- Pet leashes, food bowls
- Pet health records
- No weapons, alcohol, or illegal drugs are allowed in public shelters.



Don't forget your animals supplies and necessities!



Photo provided by ASPCA

ALL HAZARD INFORMATION



WHAT TO DO AFTER A FLOOD

- Return home only when authorities say it is safe.
- Be aware of areas where floodwaters have receded and watch out for debris, snakes, fire ants, alligators, etc. Flood waters often erode roads and walkways.
- Do not wade through flood waters.
- Do not attempt to drive through areas that are still flooded.
- Avoid standing water as it may be electrically charged from underground or downed power lines.
- Photograph damage to your property for insurance purposes.

www.ready.gov/floods

Separating Your Debris

Debris should be placed curbside, without blocking the roadway or storm drains.

NO PICKUP ZONE
Any debris placed from the sidewalk toward your property will not be picked up.

DEBRIS SEPARATION
Separate debris into the six categories shown below.

DO NOT STACK OR LEAN
Placing debris near or on trees, poles, or other structures makes removal difficult. This includes fire hydrants and meters.

UNSURE WHERE TO PLACE DEBRIS?
If you don't have a sidewalk, ditch, or utility line in front of your house, place debris at the edge of your property before the curb.

- Normal Household Trash**
Normal household trash and bagged debris of any kind will not be picked up with disaster debris. You should continue to follow your normal garbage removal schedule.
- VEGETATIVE DEBRIS**
 - Leaves (do not put in bags)
 - Logs
 - Plants
 - Tree branches
- CONSTRUCTION & DEMOLITION DEBRIS**
 - Building materials
 - Carpet
 - Drywall
 - Furniture
 - Lumber
 - Mattresses
 - Plumbing
- APPLIANCES & WHITE GOODS**
 - Air conditioners
 - Dishwashers
 - Freezers
 - Refrigerators
 - Stoves
 - Washers, dryers
 - Water heaters
- ELECTRONICS**
 - Computers
 - Radios
 - Stereos
 - Televisions
 - Other devices with a cord
- HOUSEHOLD HAZARDOUS WASTE**
 - Cleaning supplies
 - Batteries
 - Lawn chemicals
 - Oils
 - Oil-based paints and stains
 - Pesticides

STATE OF TEXAS COUNTY OF BRAZORIA

For more information contact: brazoriacountytx.gov

Severe Weather

Thunderstorms

A thunderstorm is a storm containing lightning caused by unstable atmospheric conditions. When cold upper air sinks and warm, moist air rises, storm clouds, or “thunderheads,” develop. Thunderstorms may occur by themselves, in clusters, or in lines. So, it is possible for several thunderstorms to affect one location in the course of a few hours. Some of the most severe weather occurs when a single thunderstorm affects one location for an extended period of time.

Severe thunderstorms can bring heavy rains, strong winds, hail, lightning, and tornadoes. To protect yourself in a severe thunderstorm, get inside a sturdy building away from windows and stay tuned to a battery-operated radio for weather information.



| | |
|------------------------------------|---|
| Severe Thunderstorm Watch | Severe thunderstorms are possible. |
| Severe Thunderstorm Warning | Severe thunderstorms are imminent or occurring. |
| Tornado Warning | Tornado weather is occurring or possible. |
| Hail Warning | Hail is occurring or possible. |

NWS Skywarn

Storm Spotter Program

The National Weather Service issues forecasts and warnings for the protection of life and property. Severe weather reports from weather spotters are critical for the issuance of accurate and timely warnings and thus contribute to public safety. Each year the NWS offers numerous weather spotter training sessions to increase the number of spotters who can provide this critical information. Spotters are trained at how to report hazards such as hail, damaging winds, funnel clouds, tornadoes and flooding and how to identify cloud formations that indicate severe thunderstorms. Severe weather safety is also covered. The training is free, runs about two hours and is great for anyone who is interested in weather and wants to provide information directly to the National Weather Service that contribute to the safety of their communities.

For more information on the Skywarn program and to register for a course in your area refer to the following link:

<https://www.weather.gov/SKYWARN>



SKYWARN
WEATHER.GOV®

ALL HAZARD INFORMATION

Practice HEAT SAFETY Wherever You Are

Heat related deaths are preventable. Protect yourself and others from the impacts of heat waves.



weather.gov/heat



Job Sites

Stay hydrated and take breaks in the shade as often as possible.



Indoors

Check up on the elderly, sick and those without AC.



Vehicles

Never leave kids or pets unattended - LOOK before you LOCK



Outdoors

Limit strenuous outdoor activities, find shade, and stay hydrated.

WHAT TO DO DURING A TORNADO WATCH

When a Tornado Watch is issued, make sure the following items are stored in your safe place.

- Helmets, pillows, or even a mattress to protect your head from falling and flying debris
- Shoes to protect your feet from broken glass and other sharp objects
- A whistle or noise-making device to signal for help after the storm passes
- Baby formula, diapers, and other necessary items for your children
- Pet carriers, leashes, and other pet supplies

For more information, visit: weather.gov/safety/tornado

Lightning

Do's and Don'ts

Do

- Go Inside When You Hear Thunder or See Lightning!
- Find a Sturdy House, Building, Car With A Roof
- Stay Indoors For at Least 30 Minutes After You Last Hear Thunder

Don't

- Retreat to Dugouts, Sheds, Pavilions, Picnic Shelters or Other Small Structures
- Use or Touch Electronics, Outlets, Corded Phones or Windows
- Go Under or Near Tall Trees, Swim or Be Near Water, Stand Near Metal Objects

weather.gov/lightning

ALL HAZARD INFORMATION

CAER

COMMUNITY AWARENESS & EMERGENCY RESPONSE

CAER SIRENS

Occasionally you may hear other blasts. There are Signals for internal plant communications. When in doubt call the CAER line.

If you hear the CAER Sirens at a non-scheduled time:

- Go Inside your home, car, or building.
- Close windows / turn off air conditioners.
- Do not attempt to travel or start your vehicle.
- If there is a potential for community impact, a Telephone Alert System (TAS) will be activated.
- Call the CAER line 238-CAER (2237).
- If the release gets inside your shelter place a wet cloth over your mouth and nose.
- If you hear the CAER Sirens, but can't get inside, move crosswind.

ALERT BLASTS:

GAS RELEASE
Continuous Blast

ALERT
Series of Short Blasts

EVACUATE
Series of 3 Short Blasts

ALL CLEAR
Series of 3 Long Blasts

LEARN HOW TO SHELTER IN PLACE



Go inside your home, car or building.



Do not attempt to travel or start your vehicle.



If the release gets inside your shelter, place wet cloth over your mouth and nose.



Close windows and turn off air conditioners.



Call the CAER line 238-CAER (2237).



If you hear the CAER sirens, but can't get inside, move crosswind.



Use towels to block all air flow areas.

CODE RED

CAER, Brazosport's industrial emergency alert organization utilizes CodeRED Mobile Alert. This system is geo-aware and alerts registered phones in affected areas. Using CodeRED is one of the ways CAER keeps the community and its visitors informed when needed.



979-238-CAER (2237)
brazosportcaer.com

ALL HAZARD INFORMATION



Download the
ReadyBrazoriaCounty APP
TODAY



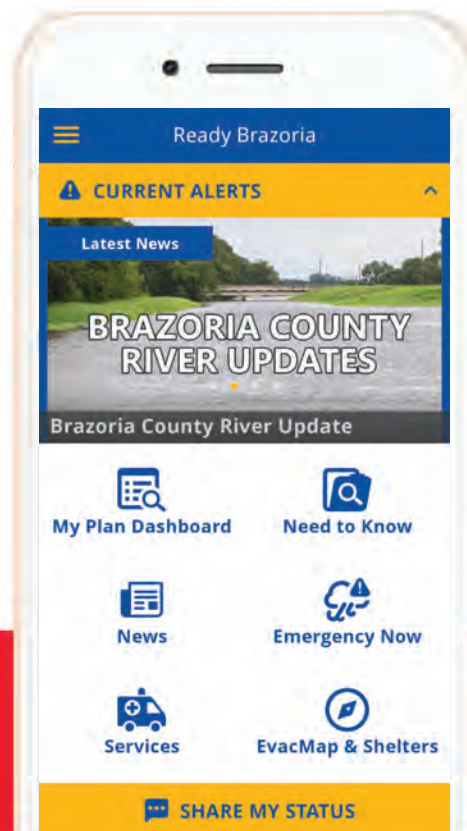
HELPING YOU KEEP YOUR LOVED ONES SAFE

When it comes to an emergency situation, having a plan can help protect you and your loved ones. That is why Brazoria County has developed a mobile app that helps its citizens properly prepare and stay informed during and after a disaster. You will be able to create your family emergency plan and get a list of the go-kit supplies in just under a minute. In addition, you will receive the latest updates and necessary information on evacuation routes, shelters, available emergency services and much more, should a disaster strike.

Find peace of mind by ensuring that you and your family are properly prepared. Download the Ready Brazoria County Preparedness App and get the tool and all the information you need in one easy-to-use app.

Key Features:

- Get instant access to evacuation maps and know which routes are safe
- Find out about the nearest emergency shelters and special services in your area
- Receive latest alerts and emergency notifications from Brazoria County
- Create your personalized family emergency plan and list of go-kit supplies quickly and painlessly
- Broadcast your status ("I am safe" or "I need help") with one single tap



The app is free and is available on App Store or Google Play today!



VOLUNTEER OPPORTUNITIES

Amateur Radio

Communication for Disaster Preparedness

Getting the message through for your family and community

When your family's lives may be at risk... What communication system do YOU want to have?

Amateur Radio Emergency Service

Make friends and enjoy the challenge!

- Get your Ham Radio License
- Practice with on-the-air "nets" or networks
- Participate in Public events
- Volunteer and help others!

Website: www.brazoriacountyares.org

Contact: info@brazoriacountyares.org



HOW CAN I HELP?

BRAZORIA COUNTY CITIZEN CORPS

In large emergencies, first responders in our community can be overwhelmed quickly. Citizens on scene may need to take action to help save lives.

Citizen Corps provides training that will allow you to protect yourself, your family, and your neighbors.

The Brazoria County Citizen Corps has several key missions:

- Initial Neighborhood Response
- Staffing the Emergency Management Call Center
- Staffing Evacuation Hubs for an evacuation
- Assisting with distribution of food, water, and ice
- Performing Preliminary Damage Assessments during emergencies
- Assist with staffing of shelters during disasters

ALL TRAINING IS FREE

Positions for everyone! Great for groups and organizations! Sign up today!

See our calendar at:

www.homelandpreparedness.org
or contact

Homeland Preparedness Project at:
info@homelandpreparedness.org

Or call 979-864-1646.



If you are interested in volunteering and/or supporting Salvation Army, Freeport Corps give them a call at (979) 233-5420, or drop by at 1618 N. Avenue J, Freeport, TX



? Returning Home

- Find out if it is safe to enter your community or neighborhood. Follow the advice of your local authorities.
- Check city and/or county websites
- Reliable social media sites. Ex. Brazoria County FB and/or Twitter [tinyurl.com/BrazoriaCo](https://twitter.com/BrazoriaCo)
- Have cash with you. ATM's may not work and stores may not be able to accept credit or debit cards.
- Bring supplies such as flashlights, batteries, bottled water and nonperishable foods in case utilities are out.
- Create back-up communication plans with family and friends in case you are unable to call from affected area.
- Plan for delays when traveling. Bring extra food, water, pillows, blankets and other items that will

make the trip more comfortable. Keep the fuel tank of your vehicle as full as possible in case gas stations are crowded, out of fuel or closed.

- Carry a road map to help you route around heavy traffic or impassable roads.
- Understand that recovery takes time. Focus on the positive and have patience. Others will have similar frustrations.
- If possible, leave children and pets with a relative or friend. If not, keep them away from hazards and floodwater.
- Beware of rodents, snakes, insects and other animals that may be on your property or in your home.

Items to Bring When Returning Home

- | | |
|--|---|
| <input type="checkbox"/> Government-issued photo ID and proof of address | <input type="checkbox"/> Insect repellent and sunscreen |
| <input type="checkbox"/> Important phone numbers | <input type="checkbox"/> Long sleeved shirts, long pants, sturdy waterproof boots and work gloves |
| <input type="checkbox"/> Bottled water and non-perishable foods | <input type="checkbox"/> Flashlight, portable radio and extra batteries |
| <input type="checkbox"/> First aid kits | <input type="checkbox"/> Cameras for photos of damage for insurance claims |
| <input type="checkbox"/> Cleanser/hand cleaning gel for personal use | <input type="checkbox"/> Tarp(s) to cover roof damage and control leaks |
| <input type="checkbox"/> Hygiene products and toilet paper | |

WELL WATER TESTING AFTER A FLOOD

Water wells that received flood water may be contaminated with bacteria, which can make you sick. Sources of bacteria may include a septic system and fecal matter from wildlife and domestic animals. Additionally, chemical contaminants can enter a well making the water unsafe to drink.

Well water can be tested at the Brazoria County Water Lab located at 409 East Orange, Angleton, Texas 77515. Water sample must be collected in a container from the lab.

Generator Safety

When the power goes out many people will turn to generators for temporary power. Before using a portable generator know the risks to insure safe and proper use.

- Never attach a generator directly to the electrical system of a structure (home, RV trailer, etc.) unless a qualified electrician has properly installed the generator with a transfer switch.
- Always plug electrical appliances directly into the generator using the manufacturer's supplied cords or extension cords that are grounded (3-pronged).
- Inspect the cords to make sure they are fully intact and not damaged.
- Do not overload a generator.
- Make sure a generator is properly grounded.
- Keep a generator dry.





Communication Information
If you city is not listed, use the
County numbers.



tinyurl.com/BrazoriaCo



@BrazoriaCounty



brazoriacountytx.gov



Search for "Ready Brazoria County" on the App Store or Google Play

Brazoria County

Emergency Management
 pio@brazoria-county.com
 www.brazoriacountytx.gov
 Steve Rosa, Emergency Manager
 24 Hour Hotline 979-864-1064
 979-388-1064
 281-756-1064



Angleton

Emergency Manager 979-849-2383
 City Hall 979-849-4364
 City Manager's Office 979-849-4364
 Mayor's Office 979-849-4364
 Fire 979-849-1265
 www.angleton.tx.us
 www.angletonpd.net

Bell County

Emergency Management
 254-933-5587



Bailey's Prairie

Emergency Manager 979-849-0134
 Mayor 979-849-0134
 Village Hall 979-849-0134
 www.baileysprairie.org

CAER

979-238-CAER (2237)
 brazosportcaer.com



Bonney

Emergency Manager/Mayor 281-595-2269
 City Hall 281-595-2269
 www.bonneytexas.gov

United Way of Brazoria County

979-849-9402
 www.uwbc.org



Brazoria

Emergency Manager 979-798-2489
 City Hall 979-798-2489
 City Manager 979-798-2489
 24 hr. Emergency Info. Line 979-798-9131
 www.cityofbrazoria.org

Salvation Army

1-979-233-5420



Brookside Village

Emergency Management 281-485-3048
 Police Chief 281-485-4844
 Mayor 281-485-3048
 City Hall 281-485-3048
 www.brooksidevillage-tx.org

Alvin

Emergency Manager 281-388-4364
 City Hall 281-388-4200
 Public Works 281-388-4325
 City Manager's Office 281-388-4230
 Mayor's Office 281-388-4275
 Cable Access Channel Channel 16
 KACC RADIO 89.7 FM
 www.alvin-tx.gov

Clute

Emergency Management 979-265-9653
Police Department 24 Hr Info 979-265-6194
Clute City Hall 979-265-2541
City Manager 979-265-2541
www.ci.clute.tx.us

Danbury

Emergency Manager 979-264-9482
Mayor 979-264-9482
City Secretary 979-922-1551 x5
City Hall/Police Dept. 979-922-1551
Utility Dept. 979-549-3129
Fire Department 979-922-1176
Police Dispatch 979-964-2392

Freeport



Emergency Manager 979-233-2111
Information Message 979-233-KNOW
City Hall 979-233-3526
Police 979-239-1211
www.freeport.tx.us

Hillcrest

Emergency Management 832-602-9958
Monday - Friday 8 AM - 5 PM 281-756-0577
City Office Not Open Following An Emergency
Mayor 281-748-7149
City Marshal 832-221-5961

Holiday Lakes

Mon Wed Thurs & Fri 1 - 5 PM, Tues 1 - 7 PM
Mayor 979.849.1136
Police Chief 979-849-3163
City Secretary 979-849-1136
www.holidaylakestexas.com

Iowa Colony

Emergency Manager 281-369-3444
City Hall 281-369-2471
Mayor 281-369-2471
City Secretary 281-369-2471
Police Chief 281-369-3444
www.cityofiowacolony.com

Jones Creek

Marshal/Emergency Mgr. 979-292-6393
Mayor 979-233-2700
Fire Chief 979-201-3594
City Admin. 979-233-2700
Marshal's Dept 979-233-3091
City Hall 979-233-1826
www.villageofjonescreektexas.com

Lake Jackson



Emergency Manager 979-415-2500
City Hall 979-415-2400
Police Department 979-415-2700
Cable Access Channel Channel 16
www.lakejackson-tx.gov

Liverpool

Emergency Manager 281-581-2342
Mayor 281-581-2342
City Secretary 281-581-2342
Police Chief 281-581-2233
www.cityofliverpooltexas.com

Manvel

Mayor 281-489-0630
City Manager/EMC 281-489-0630
Police Chief 281-489-1212
Fire Marshal/Deputy EMC 281-489-0630
Fire Chief 281-692-0279
EMS Director 281-489-6144
www.cityofmanvel.com

Oyster Creek



Emergency Manager 979-233-8481
Police Department 979-233-8481
City Administrator 979-233-0243
Mayor/City Hall 979-233-0243
Fire Department 979-233-8481
www.cityfoyster creek.org

Pearland



Emergency Manager 281-997-4648
City Hall 281-652-1600
Mayor's Office 281-652-1654
City Manager 281-652-1663
Police Department 281-997-4100
Cable Access Channel Channel 16/99 UVerse
www.pearlandtx.gov

Quintana

Mon. - Fri. 8 AM- 4:30 PM979-233-0848
Mayor979-233-4609
Emergency Manager979-373-7255
Water Emergency979-233-4281
www.quintanatx.org

Richwood



Mayor979-265-2082
City Manager.979-265-2082
Emergency Manager979-265-8157
City Hall.979-265-2082
www.richwoodtx.gov

Surfside

Police Chief.979-233-1531 ext 109
Emergency Coordinator.979-239-1151
City Hall979-233-1531
Fire Department979-233-5926
www.surfsidetx.org

Sweeny



Emergency Manager979-482-4617
City Manager/Asst. EMC979-548-3321
EOC (Only open during Emergency Situations)
.979-548-4541
Information Line979-548-3330
After Hours.979-548-3111
www.sweenytx.gov

West Columbia



Emergency Manager979-345-5121
City Mgr./Emergency Mgr.979-345-3123
City Hall.979-345-3123
EOC979-345-1900
Police Department979-345-5121
CEMS Director979-345-2390
Fire Chief979-345-3416
www.westcolumbiatx.org

Other Useful Numbers

School Districts and Colleges

Alvin ISD281-331-2320
www.alvinisd.net
Angleton ISD.979-864-8000
www.angletonisd.net
Brazosport ISD979-730-7000
www.brazosportisd.net
Columbia-Brazoria ISD979-799-1700
www.cbisd.com
Damon ISD979-742-3457
www.damonisd.net
Danbury ISD979-922-1218
www.danburyisd.org
Pearland ISD281-485-3203
www.pearlandisd.org
Sweeny ISD979-491-8000
www.sweenyisd.org
Alvin Community College.281-756-3500
www.alvincollege.edu
Brazosport College979-230-3000
www.brazosport.edu
U of H - Pearland Campus281-212-1700
www.uhcl.edu/pearland

Hospitals

UTMB Health Angleton Campus.979-849-7721
132 E. Hospital Drive Angleton, TX 77515
CHI St. Luke's Brazosport Medical Ctr.979-297-4411
100 Medical Drive Lake Jackson, TX 77566
Sweeny Community Hospital.979-548-1500
305 McKinney St Sweeny, TX 77480
Memorial Hermann Pearland.713-413-5000
16100 South Freeway Pearland, TX 77584
Pearland Medical Center713-770-7000
11100 Shadow Creek Parkway Pearland, TX 77584



**Sign-up for the
eNotification System
tinyurl.com/bcnotification**



ATLANTIC HURRICANE NAMES FOR 2019

| | | | |
|---------|-----------|-----------|-------|
| Andrea | Gabrielle | Melissa | Tanya |
| Barry | Humberto | Nestor | Van |
| Chantal | Imelda | Olga | Wendy |
| Dorian | Jerry | Pablo | |
| Erin | Karen | Rebekah | |
| Fernand | Lorenzo | Sebastien | |



NON-PROFIT ORGANIZATION
U.S. POSTAGE PAID
ANGLETON, TX
PERMIT NO. 38

*****ECRWSSDDM****

Local Postal Customer

BRAZORIA COUNTY'S 6TH ANNUAL HURRICANE AND DISASTER PREPAREDNESS EXPO SATURDAY, JUNE 22, 2019

BRAZORIA COUNTY FAIRGROUNDS
901 S. DOWNING, ANGLETON
10 AM - 2 PM

FREE HOT DOGS & DRINKS

WHILE SUPPLIES LAST

DOOR PRIZES & GOODY BAGS

WHILE SUPPLIES LAST

FREE ADMISSION & PARKING



READY HEROES

KIDS ACTIVITIES | EMERGENCY VEHICLE DISPLAYS |

EMERGENCY PREPAREDNESS EXHIBITORS

PRESENTATIONS BY: **READY HEROES** | NATIONAL WEATHER SERVICE |

VCA LAKE JACKSON ANIMAL HOSPITAL - EMERGENCY PREPAREDNESS FOR YOUR PETS |

DISASTER PLANNING FOR THOSE AT HIGH RISK

THANK YOU TO OUR SPONSORS

Walmart



CAER

COMMUNITY AWARENESS & EMERGENCY RESPONSE



EXPO PROVIDED BY:

CITY OF ALVIN | CITY OF ANGLETON | CITY OF LAKE JACKSON | CITY OF PEARLAND | VELASCO DRAINAGE
HOMELAND PREPAREDNESS PROJECT | BRAZORIA COUNTY OFFICE OF EMERGENCY MANAGEMENT

IF YOU NEED ANY INFORMATION OR WOULD LIKE TO BE AN EXHIBITOR CONTACT SHARON TROWER, BRAZORIA COUNTY PUBLIC INFORMATION OFFICER, AT 979-864-1596